



**180 North End Road,
West Kensington, W14 9NX**

£91,680

Ground floor & Lower Ground Floor of this Public House is available to rent on a new lease. We are advised the ground floor measures at 96 Sq M and the lower ground at 92 Sq M

Location

The property fronts North End Road at its junction with Star Road, in a mixed retail, commercial and densely populated residential district of West London. It is circa 350m from West Kensington tube station to the north (Piccadilly and District lines) and slightly further from West Brompton (District and Overground lines) to the southeast. The Cromwell Road (A4) arterial route is circa 450m to the north.

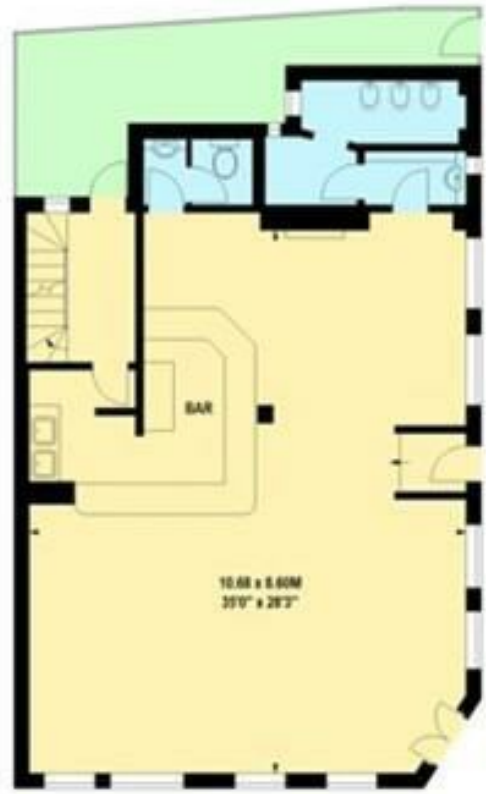


Description

Energy Efficiency Rating		
	Current	Potential
<i>Very energy efficient - lower running costs</i>		
(92 plus) A		
(81-91) B		
(69-80) C		
(55-68) D		
(39-54) E		
(21-38) F		
(1-20) G		
<i>Not energy efficient - higher running costs</i>		
England & Wales	EU Directive 2002/91/EC	

Environmental Impact (CO ₂) Rating		
	Current	Potential
<i>Very environmentally friendly - lower CO2 emissions</i>		
(92 plus) A		
(81-91) B		
(69-80) C		
(55-68) D		
(39-54) E		
(21-38) F		
(1-20) G		
<i>Not environmentally friendly - higher CO2 emissions</i>		
England & Wales	EU Directive 2002/91/EC	

Please note on behalf of Fuller Gilbert & Co and the owner of this property, that these particulars do not constitute an offer or contract. Fuller Gilbert & Co has not undertaken any tests on any of the equipment, systems or fittings described in these particulars and no warranties can be given. Please also note that wiring, plumbing and drains have not been checked. Our client has advised us of the tenure of the property. The length of lease and service charge have been provided by a Third Party. Any intending purchaser must obtain confirmation of these facts from their solicitor.



This plan is for guidance only. Drawn in accordance with RICS guidelines. Not drawn to scale unless stated. Windows and door openings are approximate. Whilst every care is taken in the preparation of this plan, please check all dimensions, shapes and compass bearings before making any decisions reliant upon them.